

CASA DEL SOL OF TEQUESTA

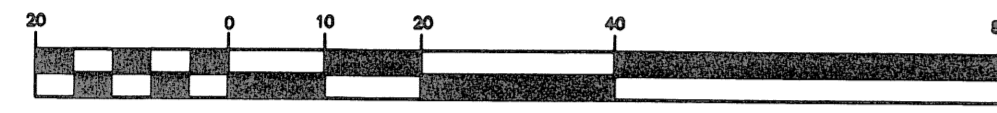
LYING IN SECTION 30, TOWNSHIP 40 SOUTH, RANGE 43 EAST,
VILLAGE OF TEQUESTA, PALM BEACH COUNTY, FLORIDA

JUNE 2005

LEGEND

- SET 4x4 PERMANENT REFERENCE MONUMENT (P.R.M.) LS #2439
- TWP TOWNSHIP
- RNG RANGE
- Sq.Ft. SQUARE FEET
- ORB OFFICIAL RECORD BOOK
- PG. PAGE
- FP&L FLORIDA POWER AND LIGHT
- P.O.C. POINT OF COMMENCEMENT
- P.O.B. POINT OF BEGINNING
- R RADIUS
- D DELTA ANGLE
- A ARC LENGTH
- R.P.B. ROAD PLAT BOOK
- F.D.O.T. FLORIDA DEPARTMENT OF TRANSPORTATION

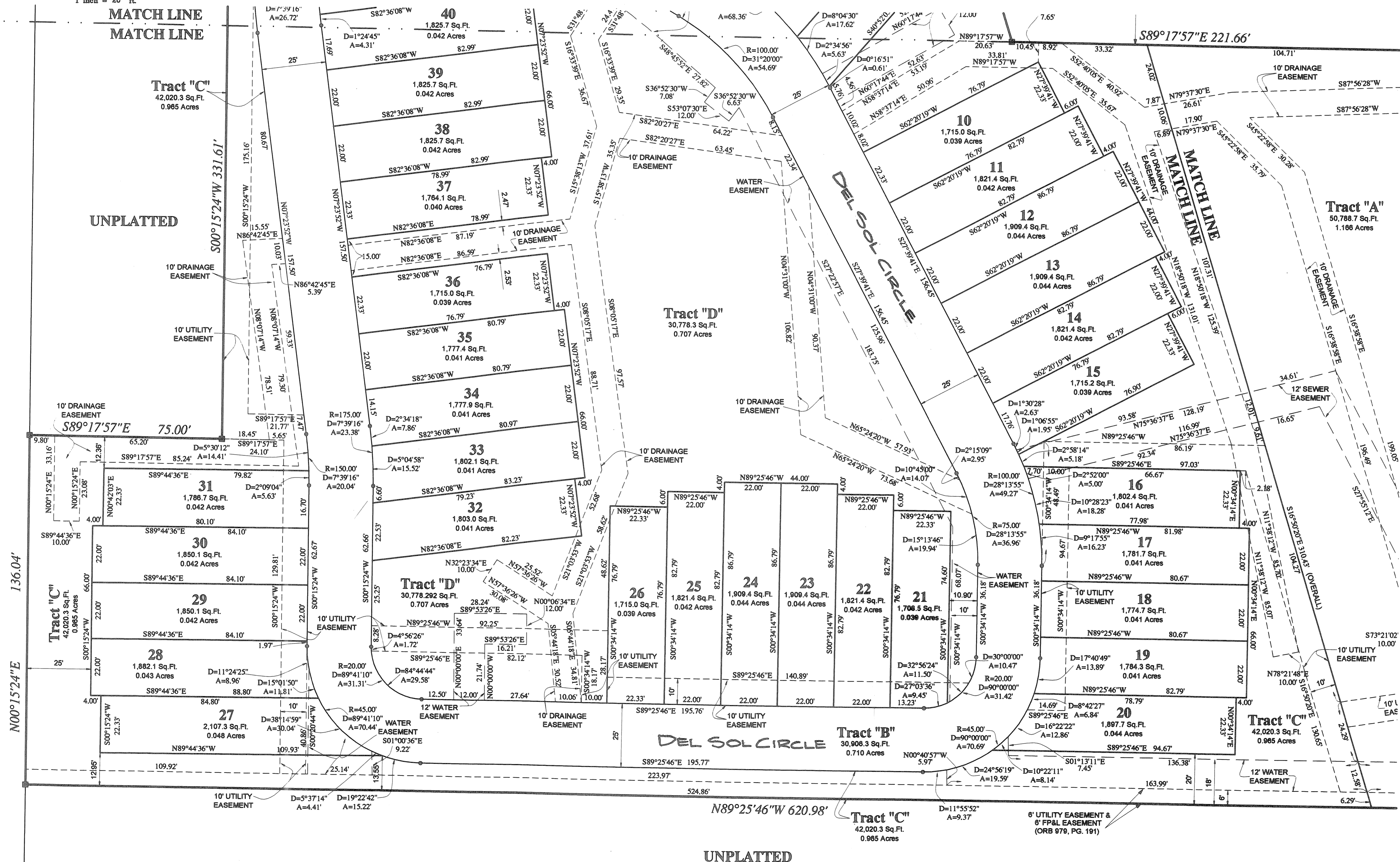
GRAPHIC SCALE



MATCH LINE
MATCH LINE

Tract "C"
42,020.3 Sq.Ft.
0.965 Acres

UNPLATTED



Tract "A"
50,788.7 Sq.Ft.
1.166 Acres

Tract "D"
30,778.3 Sq.Ft.
0.707 Acres

Tract "B"
30,806.3 Sq.Ft.
0.710 Acres

Tract "C"
42,020.3 Sq.Ft.
0.965 Acres

UNPLATTED

SHEET 3 OF 4

DAILEY
AND ASSOCIATES, INC.
Surveying and Mapping

112 N. U.S. HIGHWAY NO. 1
TEQUESTA, FLORIDA 33469
PHONE: (561) 748-8424
BUSINESS LICENSE: LB# 2799